

# GREYWATER SYSTEM

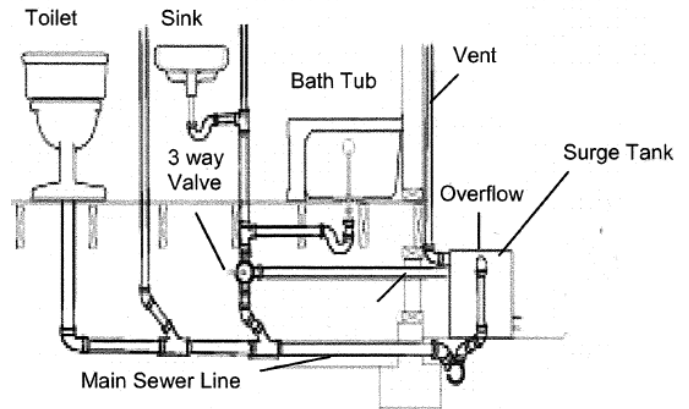
## BESO Resilience Upgrade Measure

### MEASURE INFORMATION

#### Credits: 1

#### Description:

A greywater system captures gently used water from bathtubs, showers, and bathroom sinks and redirects it for landscape irrigation, helping conserve water and reduce demand on the sewer system. These systems require plumbing separation, filtration or surge tank, and proper routing to irrigate your yard safely and effectively. Unlike laundry-to-landscape systems, which reuse water from clothes washing, this approach focuses on reusing water from bathroom fixtures, such as sinks and showers, typically the largest sources of greywater in a home. It's a smart upgrade for drought resilience, lowering outdoor water use while supporting healthy landscaping.



#### Installation Criteria:

Install a plumbing system that reuses gently used water from sinks and showers for irrigation. Must be a permitted system that diverts greywater from at least two fixtures (sinks or showers). *A laundry to landscape system would not qualify.*

#### Required Verification Documentation:

- Permit + approved final inspection – *Include “for BESO compliance” in the scope of work section of your building permit application.*

#### Benefits:



Decrease  
Utility Bills



## ADDITIONAL RESOURCES

### Greywater System Guides:

- The [San Francisco Greywater Design Manual](#) is a practical guide for homeowners and professionals that outlines safe, code compliant methods for designing, permitting, installing, and maintaining residential graywater systems for outdoor irrigation to conserve potable water and reduce sewer demand.

### Permitting Resources:

- For information about the permit process, including permit types and requirements, visit the [City's permitting webpage](#). If you're new to the process or have questions, you can also [schedule an appointment with a permit specialist](#) for personalized guidance.

### Laundry to Landscape:

- While a laundry to landscape system is not eligible for BESO Credits, it's still a low cost, easy to install graywater solution, typically involving a three-way diverter valve that lets you send your washing machine's wastewater to your landscape. [EBMUD offers a rebate of up to \\$100](#) for the purchase of the following equipment essential to a graywater laundry-to-landscape system: brass three-way diverter, air admittance or anti-siphon valve, and PVC conveyance line.